

LUXOMAT® LC-Click-N 200



With Anti-creep

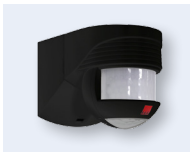


white

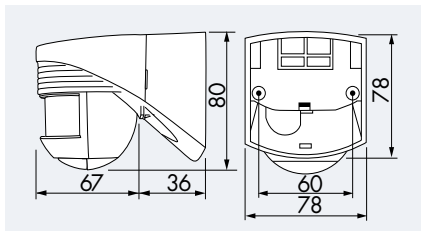
NEW!



brown



black



■ TECHNICAL DATA

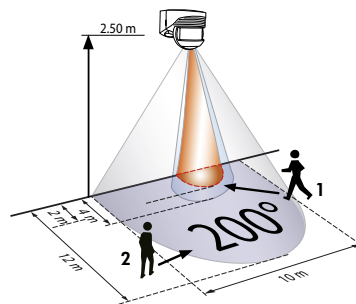
- 230 V~ ±10%
- 200°
- max. 12 m when walking across (tangential)
- IP44 / Class II / C E
- L 103 x W 78 x H 80 mm
- 25°C to +50°C
- Housing UV- and shock-resistant Polycarbonate

■ Channel 1 (light control)

- 1000 W, cosφ = 1
- 4 sec. - 10 min.
- 2 - 1000 Lux

■ PRODUCT INFORMATION

- Motion detector with detection area of 200°
- Spherical head adjustable in two levels
- 360° anti-creep for a gapless monitoring
- Range adjustable by moving the sensor-head
- The detection area can be altered by blinds, which are included. The blinds can be clipped-on and moved to stop unwanted detection.
- Adjustment light level and time setting by screwdriver and potentiometers at the bottom of the sensor head infinitely variable
- Wall mounting
- Easy installation with plug-in socket
- **Application examples:** monitoring for narrow premises, ways, gateways or at door sills



- 1 ■ Walking towards
- 2 ■ Walking across
- Anti-creep

■ ACCESSORY (OPTIONAL)

Wire basket



Description	Colour	Part number
LC-Click-N 200	white	91002
LC-Click-N 200	brown	91012
LC-Click-N 200	black	91022
Accessory (optional)		
Wire basket BSK	white	92467